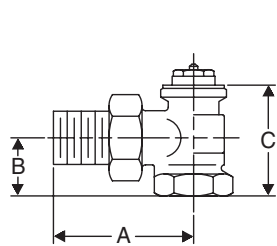
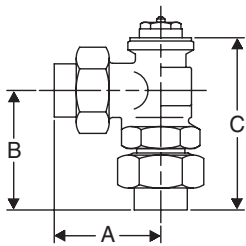




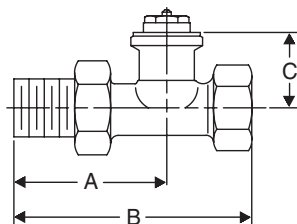
RV-4 Thermostatic Radiator Valves



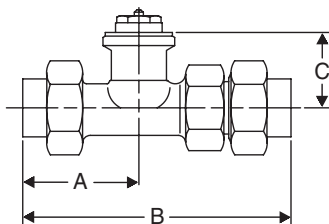
RV-4 Angle



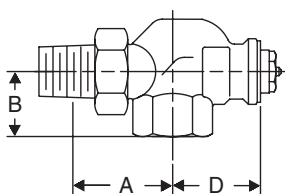
RV-4 Angle Solder



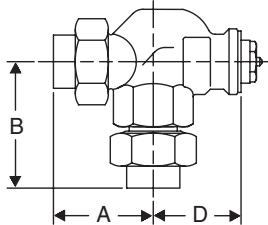
RV-4 Straight



RV-4 Straight Solder



RV-4 Reversed Angle



RV-4 Reversed Angle Solder



For Hot Water and Low Pressure Steam

Armstrong's thermostatic radiator valves are offered in straight, angle and reversed angle patterns. Thermostatic operators provide accurate and automatic control of space temperature. They are ideal for hot water and low pressure steam heated convectors, radiators, thermostatically controlled hydronic or low pressure heat exchangers. Five styles of thermostatic operators are available with liquid, liquid remote or low density wax sensors.

For a fully detailed certified drawing, refer to:

- RV-4 Angle **CDY #1049**
- RV-4 Straight **CDY #1050**
- RV-4 Reversed Angle **CDY #1051**

Radiator Products

Physical Data—Valve Bodies

Pattern	Angle								Straight								Reversed Angle											
	in		mm		in		mm		in		mm		in		mm		in		mm		in		mm					
Pipe Conn. FPT x MPT	1/2	15	3/4	20	1	25	1-1/4	32	1/2	15	3/4	20	1	25	1-1/4	32	1/2	15	3/4	20	1	25						
"A"	2-5/16	59	2-5/8	66	2-15/16	59	3-7/16	65	2-15/16	59	2-1/2	64	3-1/8	73	3-9/16	90	2-3/8	60	2-5/8	66	3	76						
"B"	1	25	1-1/8	28	1-5/16	33	1-9/16	39	3-3/4	95	4-3/16	106	4-15/16	78	6	150	1-1/16	27	1-3/4	44	1-5/16	33						
"C"	1-15/16	49	2-1/16	52	2-3/8	60	2-3/4	70	1-1/8	28	1-1/8	28	1-1/8	28	1-3/8	35	-	-	-	-	-	-						
"D"	-	-	-	-	-	-	-	-	-	-	-	-	-	-	-	-	1-9/16	40	1-3/8	35	1-1/2	38						
Weight, lb (kg)	3/4 (0.34)				1-1/2 (0.68)				1-3/4 (0.79)				3/4 (0.34)				1 (0.45)		1-1/2 (0.68)		1-3/4 (0.79)		1 (0.45)		1-1/4 (0.56)		1-1/2 (0.68)	

Physical Data—Solder Valve Bodies

Pattern	Angle				Straight				Reversed Angle							
	in		mm		in		mm		in		mm		in		mm	
Pipe Connection Solder	1/2	15	3/4	20	1/2	15	3/4	20	1/2	15	3/4	20	1/2	15	3/4	20
"A"	1-7/8	47	2-1/4	57	1-7/8	47	2-5/32	55	1-3/4	44	2-1/4	57	1-7/8	47	2-1/4	57
"B"	2-5/32	55	2-1/2	64	4-7/16	113	5-1/4	133	2-3/16	56	3-1/8	79	2-5/32	55	2-1/2	64
"C"	3	76	3-1/2	89	1-1/4	32	1-5/32	29	-	-	-	-	3	76	3-1/2	89
"D"	-	-	-	-	-	-	-	-	1-1/2	38	1-1/2	38	-	-	-	-
Weight, lb (kg)	3/4 (0.34)				1 (0.45)				3/4 (0.34)				1-1/3 (0.60)			

Pressure/Temperatures

Model	"A" Insert (Standard On All Valves)	"S" Insert (Provides Longer Life on Steam Service)
Maximum Steam, psi (bar)	15 (1)	
Maximum Temp. °F (°C)	250 (121)	
Max. Diff.—Water, psi (bar)	15 (1)	
Max. Static Pressure, psi (bar)	150 (10)	

NOTE: Normally closed insert available.

Designs, materials, weights and performance ratings are approximate and subject to change without notice. Visit armstronginternational.com for up-to-date information.