

DIMENSIONS & DATA CERTIFIED FOR:

Representative:

Order:

Customer:

Order:

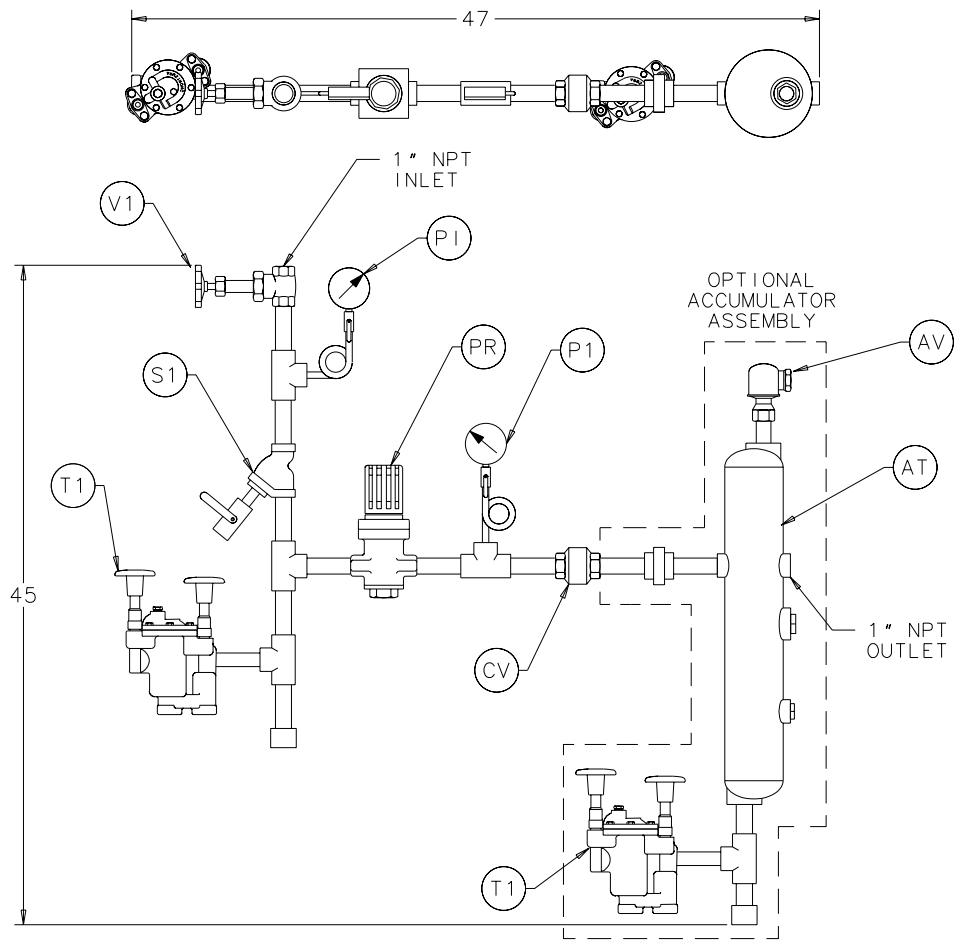
Project:

Requirements:

By:


Date:

TAG	DESCRIPTION & MATERIAL
V1	1" GATE VALVE BRONZE ASTM B-62
S1	1" STRAINER W/ BLOWDOWN CAST IRON ASTM A48-30 ARMSTRONG CA9SC
AV	1/2" AIR VENT 304 STAINLESS STEEL ARMSTRONG TTF-1R
PR	1" PRESSURE REDUCING VALVE CAST BRONZE ASTM B584 ARMSTRONG GD-30
PI	1/4" PRESSURE GAUGE W/ISOLATION VALVE 0-200 PSIG
CV	1" INLINE CHECK VALVE ASTM A351 CF8M DURABLA SCV
T1	STEAM TRAP ARMSTRONG 1/2" 811TVS-STR/CV
AT	ACCUMULATOR 150 PSIG 4" X 24" CARBON STEEL ASME SEC. VIII "U" STAMP
	FITTINGS 150# MALLEABLE IRON ASTM A-197 GR. 150
	PIPING ASTM A120/53



NOTES:

1. WHEN ORDERING SPECIFY SPRING RANGE FOR THE GD-30 PRV.
2. ARMSTRONG RESERVES THE RIGHT TO CHANGE THE DESIGN, MATERIALS, OR COMPONENTS WITHOUT NOTICE.
3. ACCUMULATOR ASSEMBLY CAN BE ORDERED AS AN OPTION.

 Armstrong Fluid Handling, Inc. Three Rivers, MI. 49093 Telephone (616) 278-6500 Fax (616) 279-3150 Posted on Armstrong's homepage www.armstrong-intl.com		
Product	CDF No.	Date
1" GD-30 PRV STATION	CDF1050	06/06/00
		Rev. A