

DIMENSIONS & DATA CERTIFIED FOR:

Representative:

Order:

Customer:

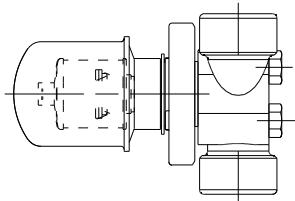
Order:

Project:

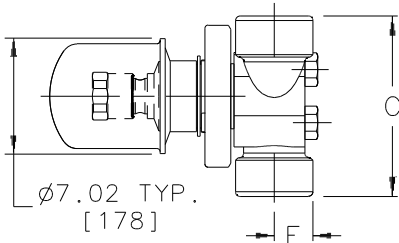
Requirements:

By:

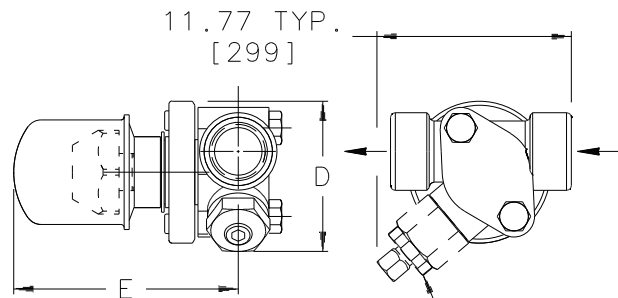
Date:



TT-2000-IS2



CD-2000-IS2



WT-2000-IS2

Dimensions Are In Inches[mm]

LIST OF MATERIALS:

NAME OF PART	MATERIAL
TT-2000-IS2:	
BELLOWS	SS, BRONZE W/PHOSPHOR-BRONZE
GASKET, BELLOWS	COPPER CLAD NON-ASBESTOS
BODY, TRAP	ASTM A167 T304L SS
CD-2000-IS2:	
CHAMBER, DISC & BODY	HARDENED SS
BODY, TRAP	ASTM A167 T304L SS
WT-2000-IS2:	
WAFER	HASTELLOY
BODY & CAP(CAPSULE)	ASTM A276 T304 SS
BODY, TRAP	ASTM A167 T304L SS
CONNECTOR:	
BLOCK	ASTM A351 GR. CF8 T304 SS
GASKET	T304 SS NON-ASBESTOS
RETAINING RING	CARBON STEEL
FLANGE	ASTM A105 CARBON STEEL, NICKEL PLATED
RETAINER, FLANGE	ASTM A276 T304 SS
SCREEN	ASTM A167 T304 SS, 20x20 MESH
RETAINER, SCREEN	ASTM A479 T304 SS
GASKET, RETAINER	ASTM A167 T316 SS
BOLTS	ASTM A193, GR. B7, ZINC PLATED
PLUG, PIPE	CARBON STEEL

TECHNICAL INFORMATION

MODEL NO.	TT-2000, CD-2000, WT-2000	
CONNECTIONS	1/2[DN15] 3/4[DN20]	1"[DN25]
"C" (FACE-TO-FACE)	3-1/2[89]	4[102]
"D" (HEIGHT)	2.85[72]	2.89[73]
"E" (C TO OUTSIDE)	4-3/8[111]	4-13/32[112]
"F" (C TO RETAINER)	3/4[19]	29/32[23]
BLOWDOWN CONN. (NPT)	1/4[6]	
WEIGHT lbs [kgs]	TT-2000 3.3[7.3] CD-2000 3.2[7] WT-2000 3.5[7.7]	3.5[7.7] 3.4[7.5] 3.8[8.3]

OPTIONS:

CONNECTIONS - NPT, BSPT OR SW	
LEFT-TO-RIGHT FLOW	
RIGHT-TO-LEFT FLOW	
BLOWDOWN VALVE	

DESIGN INFORMATION

MAX. OPERATING PRESSURE	TT-2000 300 psig at 423°F [21 bar at 217°C] CD-2000 400 psig at 600°F [28 bar at 316°C] WT-2000 400 psig at 650°F [28 bar at 343°C]
MAXIMUM ALLOWABLE PRESSURE (VESSEL DESIGN)	400 psi [28bar]



Armstrong International, Inc.
Three Rivers Division
Three Rivers, MI 49093

Armstrong (269) 273-1415 Fax(269) 278-6555
Posted on Armstrong's homepage www.armstronginternational.com

Product

CD No.

Date

TRAP
TT-2000 W/IS2
CD-2000 W/IS2
WT-2000 W/IS2

1117

11/30/00

Rev; A

By; Paul G.